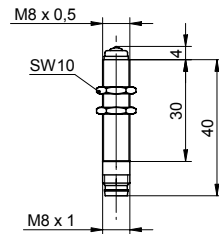


My-Com precision switches

MY-COM H

sample drawing



general data

repeat accuracy	< 0,001 mm
activating force	75 cN
mech. pre-run / overrun	- / 0,6 mm approx.

electrical data

DC voltage max.	15 VDC
switch. current DC max.	2 mA
AC voltage max.	24 VAC
switch. current AC max.	50 mA
output circuit	break function (NC) mechanical

mechanical data

activating pin	ruby
housing material	brass nickel plated
dimension	8 mm

ambient conditions

operating temperature	-20 ... +75 °C
protection class	IP 67

order reference	housing length	connection types
MY-COM H75/80	21 mm	cable, 80 cm
MY-COM H75/S35	40 mm	connector M8

sample picture

